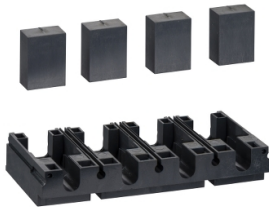


# Product data sheet

Specifications



connection adapter for plug in  
base, ComPact NSX100/160/250,  
4 poles

LV429307

## Main

Product Or Component Type	Connection adapter
Accessory / Separate Part Category	Connection accessory
Range Compatibility	ComPact ComPact NSX100 ComPact ComPact NSX160 ComPact ComPact NSX250 ComPact Compact NSX100 DC ComPact Compact NSX160 DC ComPact Compact NSX250 DC
Poles Description	4P

## Complementary

Mounting Mode	Plug-in
[In] Rated Current	250 A

## Packing Units

Unit Type Of Package 1	PCE
Number Of Units In Package 1	1
Package 1 Height	2.600 cm
Package 1 Width	7.200 cm
Package 1 Length	16.300 cm
Package 1 Weight	110.000 g
Unit Type Of Package 2	S04
Number Of Units In Package 2	40
Package 2 Height	30.000 cm
Package 2 Width	40.000 cm
Package 2 Length	60.000 cm
Package 2 Weight	5.030 kg
Unit Type Of Package 3	P12
Number Of Units In Package 3	160
Package 3 Height	41.500 cm
Package 3 Width	80.000 cm
Package 3 Length	120.000 cm
Package 3 Weight	31.744 kg

List Price displayed is VAT EXCLUSIVE.

Disclaimer: This documentation is not intended as a substitute for and is not to be used for determining suitability or reliability of these products for specific user applications

# Contractual warranty

Warranty	18 months
----------	-----------

Sustainability



**Green Premium™ label** is Schneider Electric’s commitment to delivering products with best-in-class environmental performance. Green Premium promises compliance with the latest regulations, transparency on environmental impacts, as well as circular and low-CO<sub>2</sub> products.

**Guide to assessing product sustainability** is a white paper that clarifies global eco-label standards and how to interpret environmental declarations.

[Learn more about Green Premium >](#)

[Guide to assess a product’s sustainability >](#)



Transparency   RoHS/REACH

## Well-being performance

 Mercury Free

 RoHS Exemption Information   [Yes](#)

## Certifications & Standards

Reach Regulation	<a href="#">REACH Declaration</a>
Eu Rohs Directive	Pro-active compliance (Product out of EU RoHS legal scope)
China Rohs Regulation	<a href="#">China RoHS declaration</a> Product out of China RoHS scope. Substance declaration for your information
Environmental Disclosure	<a href="#">Product Environmental Profile</a>
Circularity Profile	No need of specific recycling operations